

THE
PACIFIC
 PACIFIC HEIGHTS

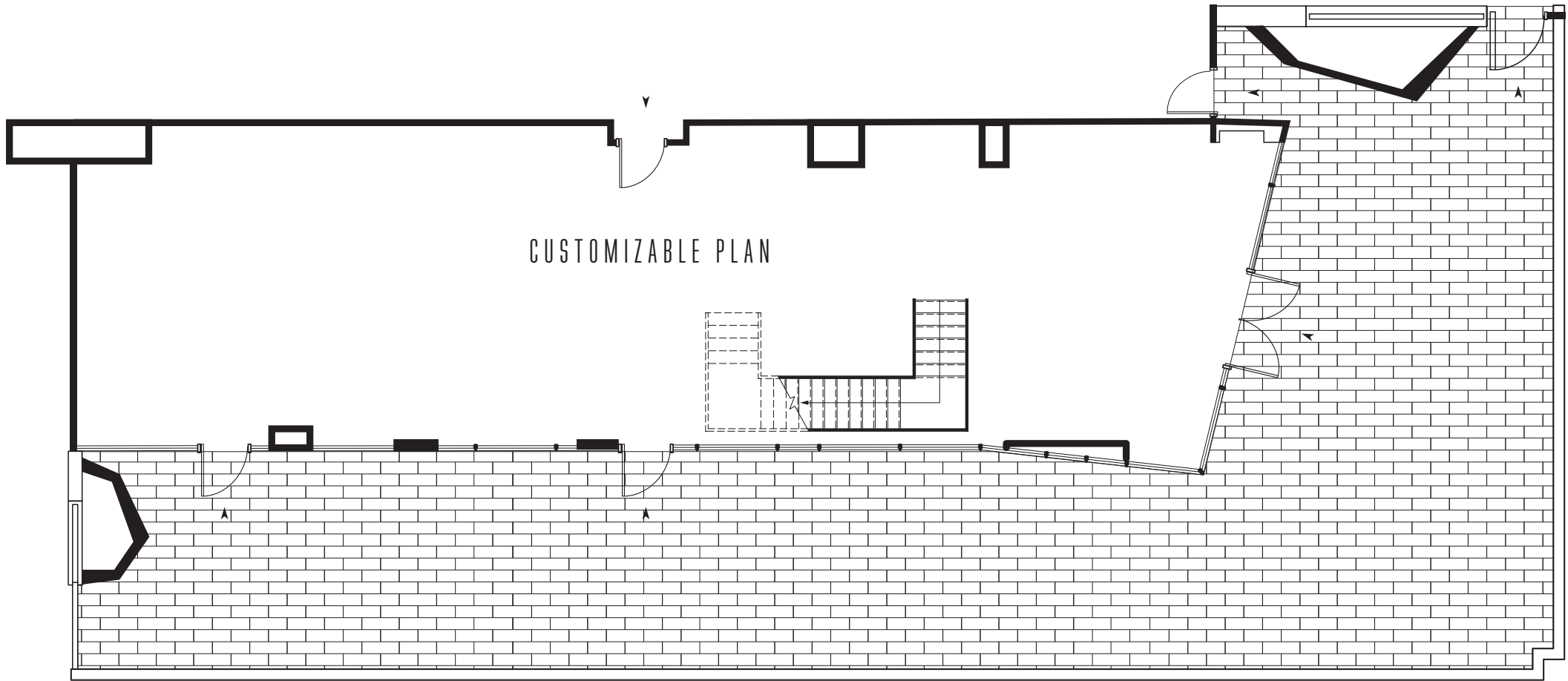
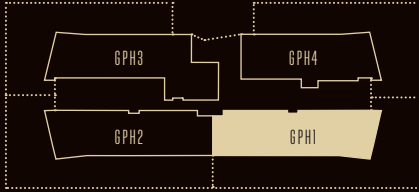
GPH1

GRAND PENTHOUSE

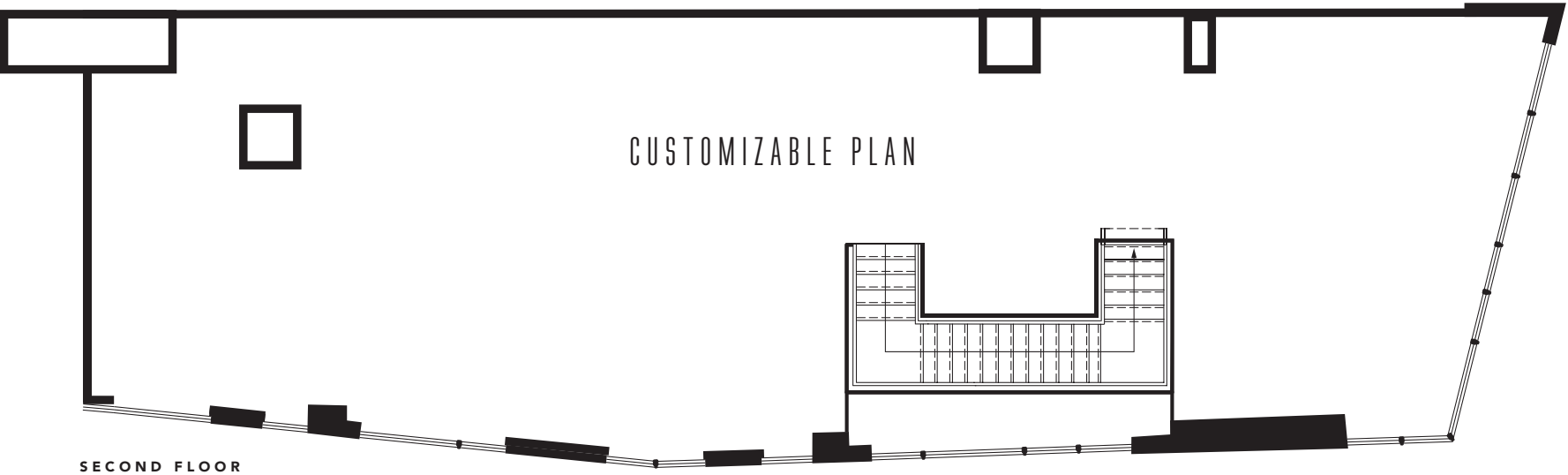
LIVING / 3,851
APPROXIMATE SQUARE FOOTAGE

TERRACE / 2,238
APPROXIMATE SQUARE FOOTAGE

UP TO 4 BED / 4.5 BATH

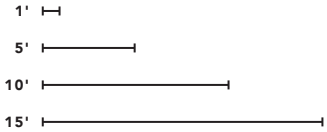


FIRST FLOOR



SECOND FLOOR

Plan not to scale. Trumark Urban and The Pacific reserve the right to make modifications in plans, exterior designs, prices, materials, specifications, finishes and standard features at any time without notice. Photographs, renderings and landscaping are illustrative and conceptual. All artist's renderings are for representational purposes only and subject to variances. Windows and floor plans vary per residence, elevation and type. Square footage is approximate and should not be relied upon as a representation, express or implied. Penthouses shown will be delivered pre-build and plumbing-ready to allow for custom configuration. The above floor plan is for illustrative purposes only. Please inquire for details. All rights reserved. Real estate consulting, sales and marketing by Polaris Pacific. A licensed California, Arizona, Colorado, Oregon and Washington broker—CA BRE #01499250. ©2016 The Pacific. Brokers must accompany their client(s) and register them on their first appointment in order to be eligible for a broker commission.



SOUTH-EAST VIEWS

2121 WEBSTER STREET
 SAN FRANCISCO, CALIFORNIA 94115

THEPACIFICHEIGHTS.COM
 415 928 2121

THE
PACIFIC
 PACIFIC HEIGHTS

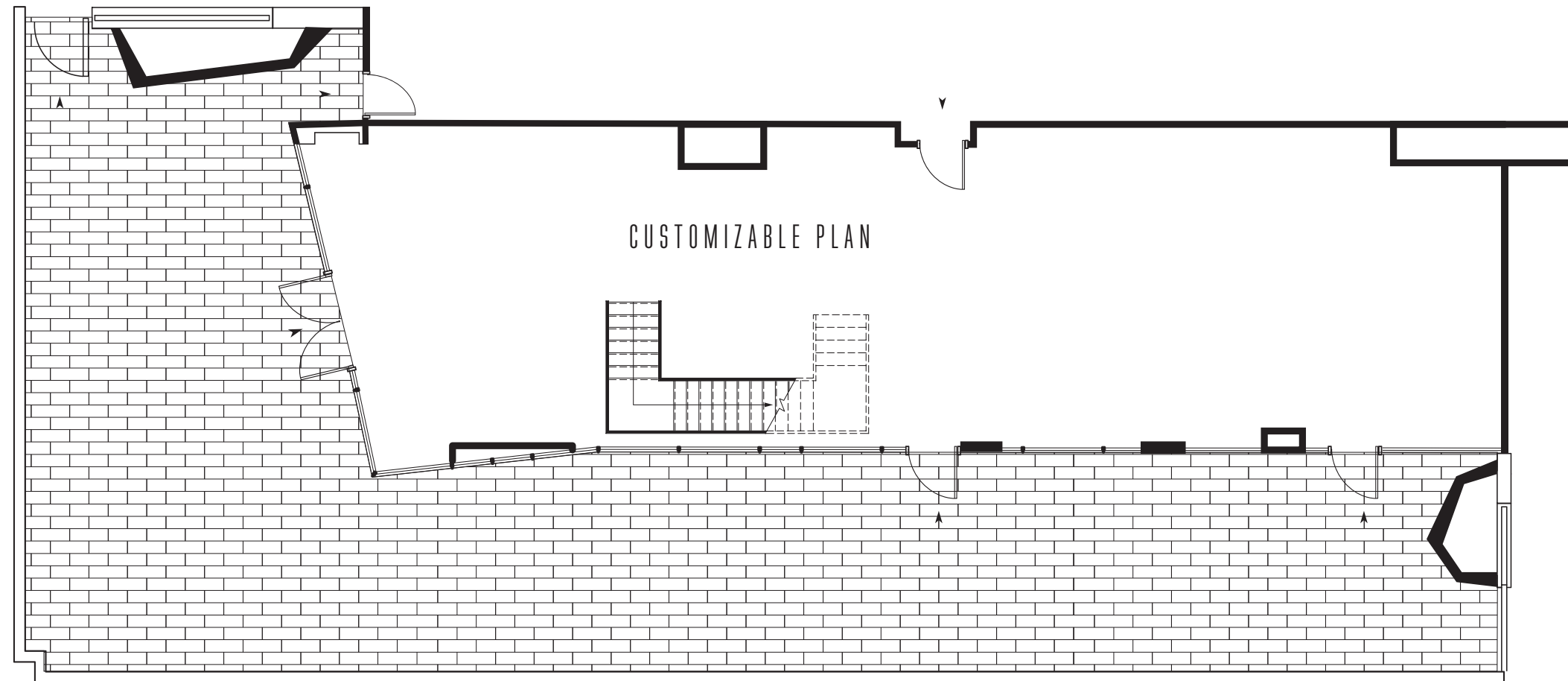
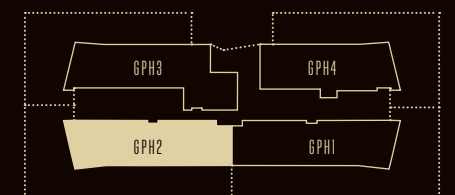
GPH2

GRAND PENTHOUSE

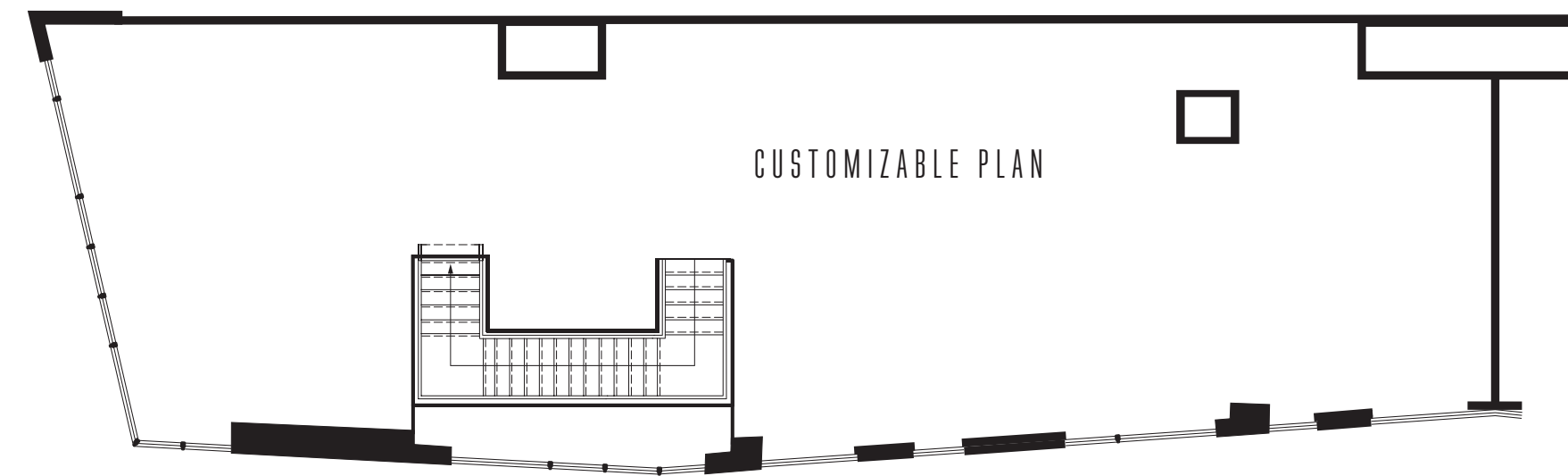
LIVING / 3,814
APPROXIMATE SQUARE FOOTAGE

TERRACE / 2,264
APPROXIMATE SQUARE FOOTAGE

UP TO 4 BED / 4.5 BATH

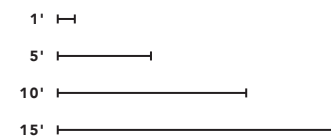


FIRST FLOOR



SECOND FLOOR

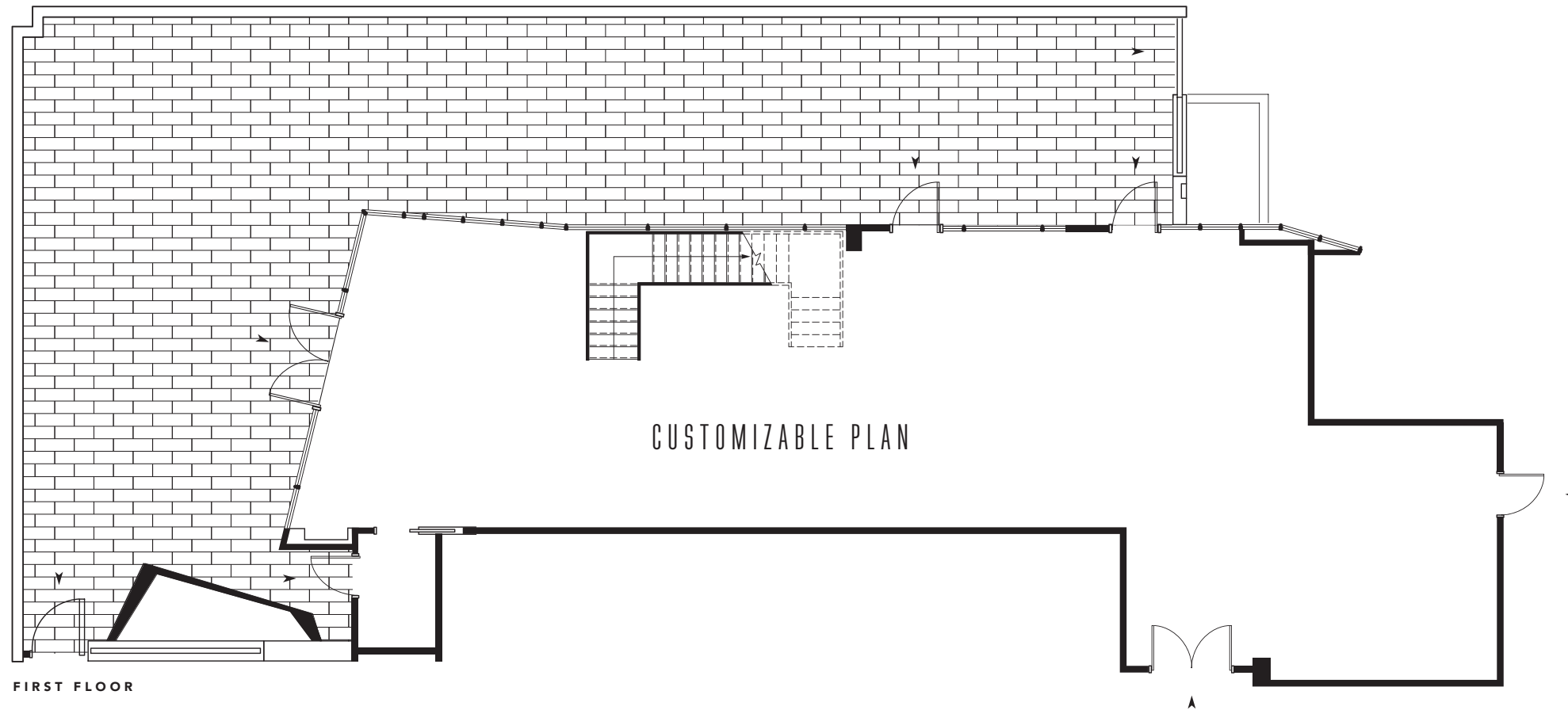
Plan not to scale. Trumark Urban and The Pacific reserve the right to make modifications in plans, exterior designs, prices, materials, specifications, finishes and standard features at any time without notice. Photographs, renderings and landscaping are illustrative and conceptual. All artist's renderings are for representational purposes only and subject to variances. Windows and floor plans vary per residence, elevation and type. Square footage is approximate and should not be relied upon as a representation, express or implied. Penthouses shown will be delivered pre-build and plumbing-ready to allow for custom configuration. The above floor plan is for illustrative purposes only. Please inquire for details. All rights reserved. Real estate consulting, sales and marketing by Polaris Pacific. A licensed California, Arizona, Colorado, Oregon and Washington broker—CA BRE #01499250. ©2016 The Pacific. Brokers must accompany their client(s) and register them on their first appointment in order to be eligible for a broker commission.



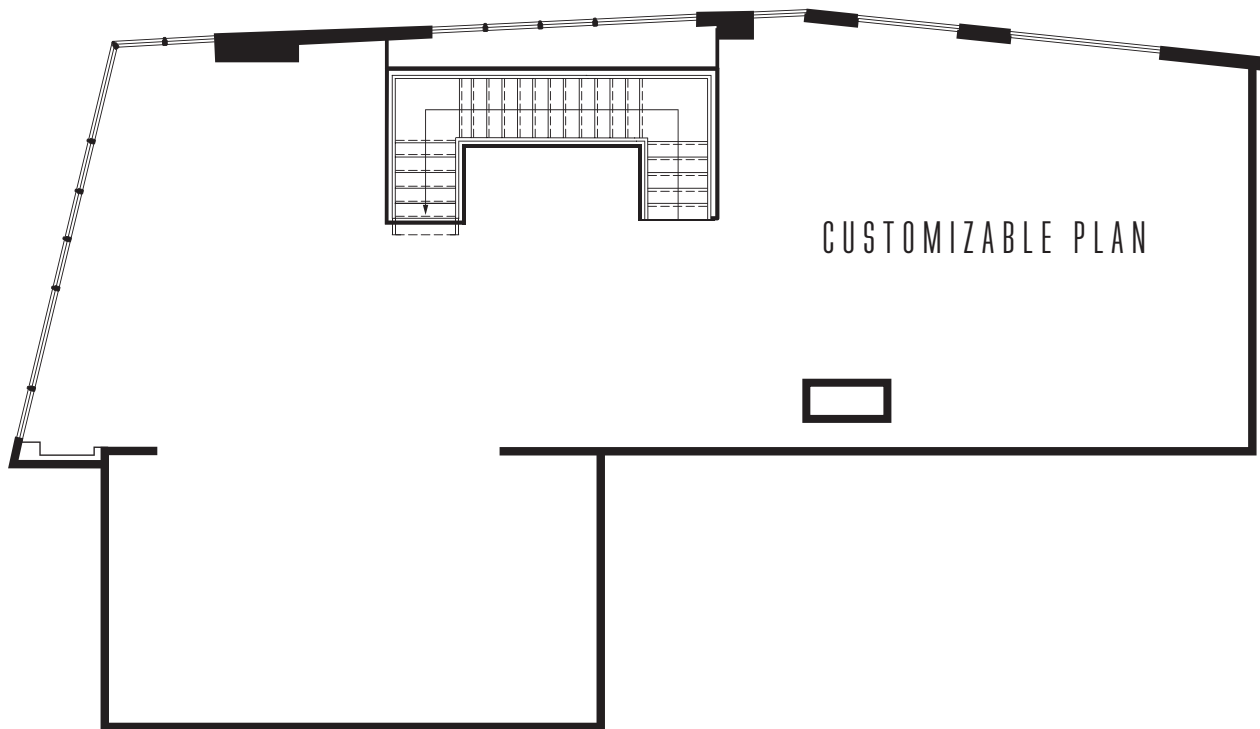
SOUTH-WEST VIEWS

2121 WEBSTER STREET
 SAN FRANCISCO, CALIFORNIA 94115

THEPACIFICHEIGHTS.COM
 415 928 2121



FIRST FLOOR



SECOND FLOOR

THE
PACIFIC
PACIFIC HEIGHTS

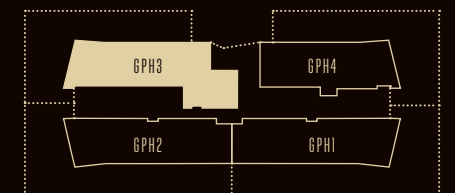
GPH3

GRAND PENTHOUSE

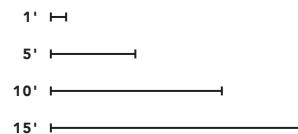
LIVING / 4,048
APPROXIMATE SQUARE FOOTAGE

TERRACE / 1,978
APPROXIMATE SQUARE FOOTAGE

UP TO 4 BED / 4.5 BATH



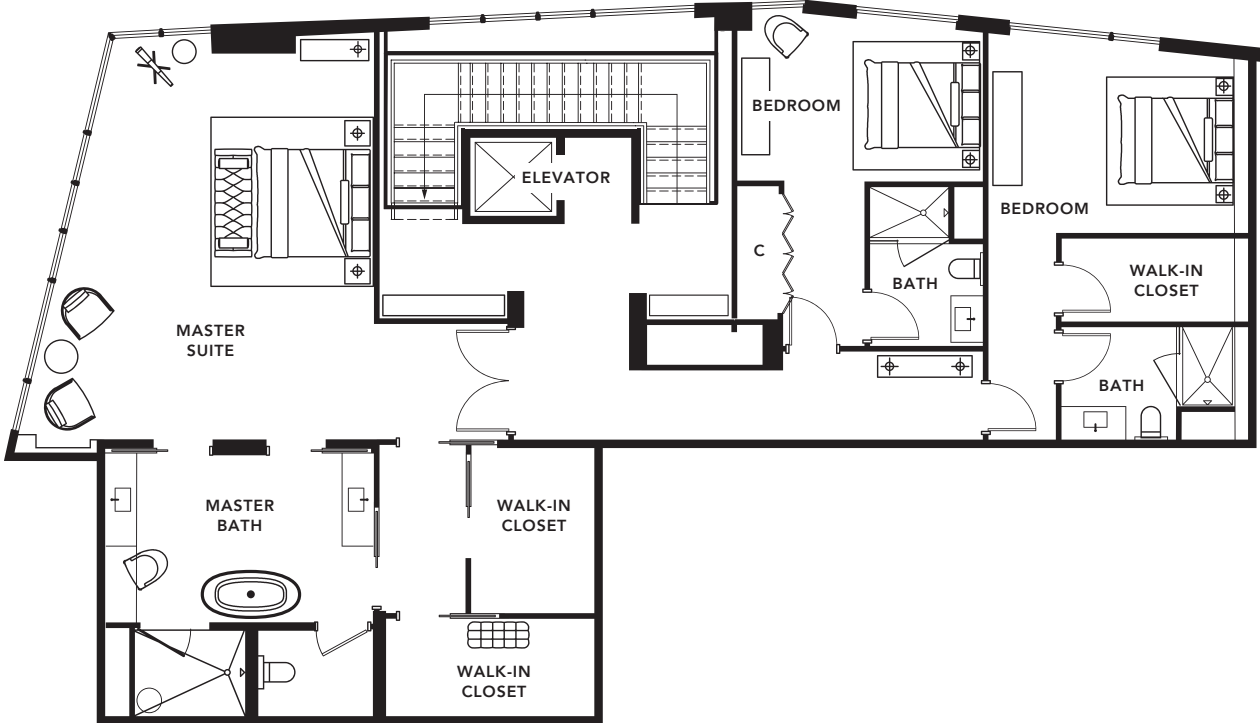
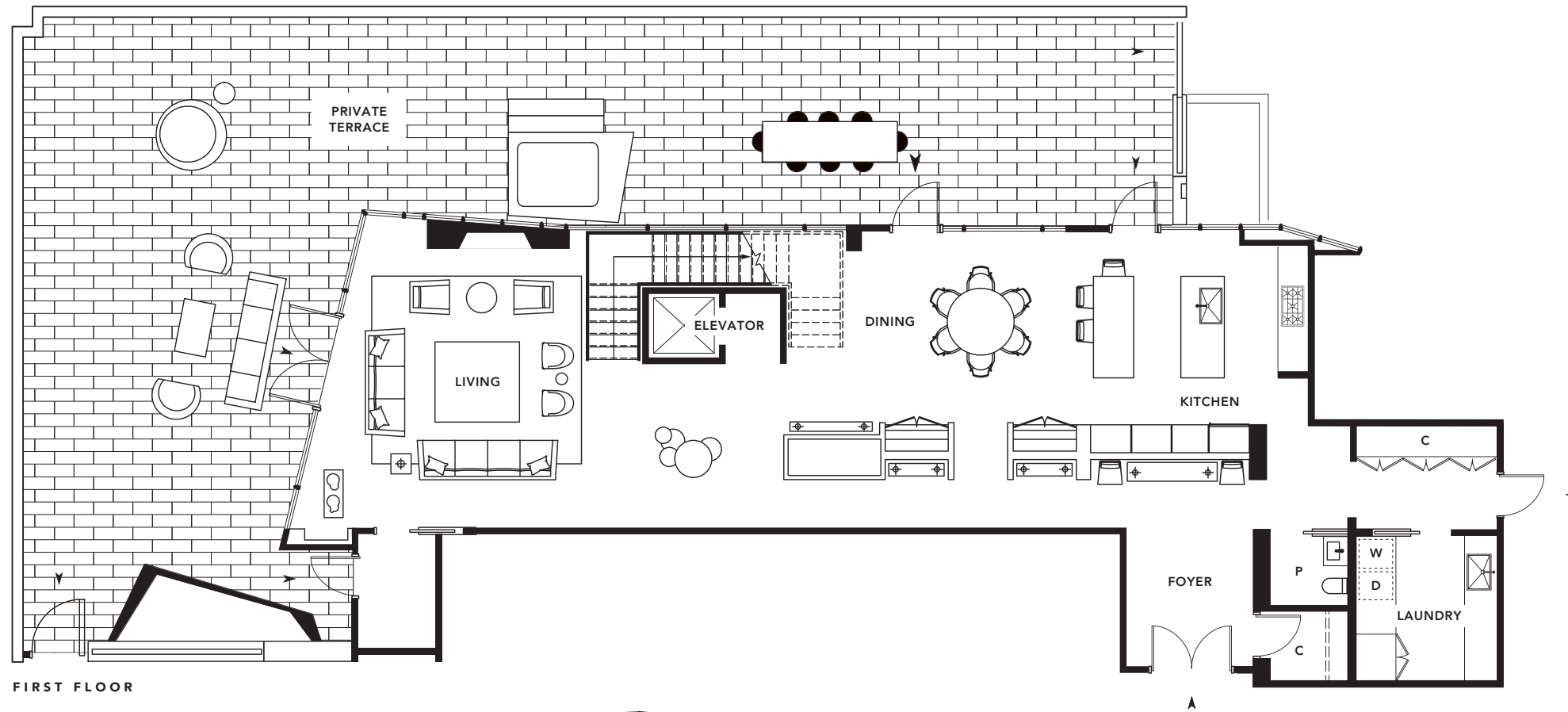
Plan not to scale. Trumark Urban and The Pacific reserve the right to make modifications in plans, exterior designs, prices, materials, specifications, finishes and standard features at any time without notice. Photographs, renderings and landscaping are illustrative and conceptual. All artist's renderings are for representational purposes only and subject to variances. Windows and floor plans vary per residence, elevation and type. Square footage is approximate and should not be relied upon as a representation, express or implied. Penthouses shown will be delivered pre-build and plumbing-ready to allow for custom configuration. The above floor plan is for illustrative purposes only. Please inquire for details. All rights reserved. Real estate consulting, sales and marketing by Polaris Pacific. A licensed California, Arizona, Colorado, Oregon and Washington broker—CA BRE #01499250. ©2016 The Pacific. Brokers must accompany their client(s) and register them on their first appointment in order to be eligible for a broker commission.



NORTH-WEST VIEWS

2121 WEBSTER STREET
SAN FRANCISCO, CALIFORNIA 94115

THEPACIFICHEIGHTS.COM
415 928 2121



THE
PACIFIC
PACIFIC HEIGHTS

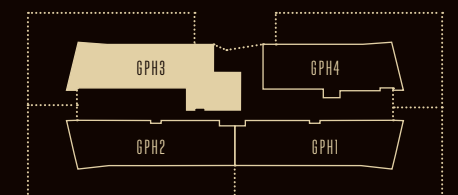
GPH3

GRAND PENTHOUSE

LIVING / 4,048
APPROXIMATE SQUARE FOOTAGE

TERRACE / 1,978
APPROXIMATE SQUARE FOOTAGE

3 BED / 3.5 BATH

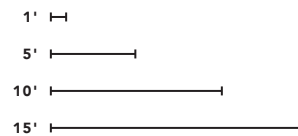


CONCEPTUAL FLOOR PLAN

2121 WEBSTER STREET
SAN FRANCISCO, CALIFORNIA 94115

THEPACIFICHEIGHTS.COM
415 928 2121

Plan not to scale. Trumark Urban and The Pacific reserve the right to make modifications in plans, exterior designs, prices, materials, specifications, finishes and standard features at any time without notice. Photographs, renderings and landscaping are illustrative and conceptual. All artist's renderings are for representational purposes only and subject to variances. Windows and floor plans vary per residence, elevation and type. Square footage is approximate and should not be relied upon as a representation, express or implied. Penthouses shown will be delivered pre-build and plumbing-ready to allow for custom configuration. The above floor plan is for illustrative purposes only. Please inquire for details. All rights reserved. Real estate consulting, sales and marketing by Polaris Pacific. A licensed California, Arizona, Colorado, Oregon and Washington broker—CA BRE #01499250. ©2016 The Pacific. Brokers must accompany their client(s) and register them on their first appointment in order to be eligible for a broker commission.



NORTH-WEST VIEWS

THE
PACIFIC
 PACIFIC HEIGHTS

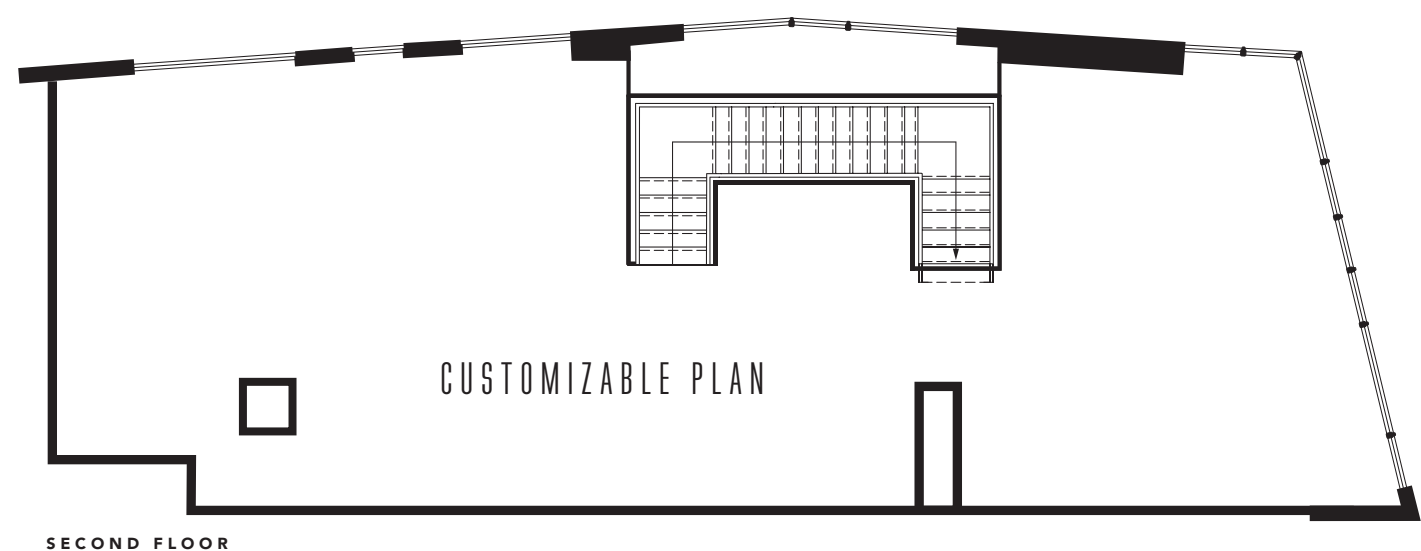
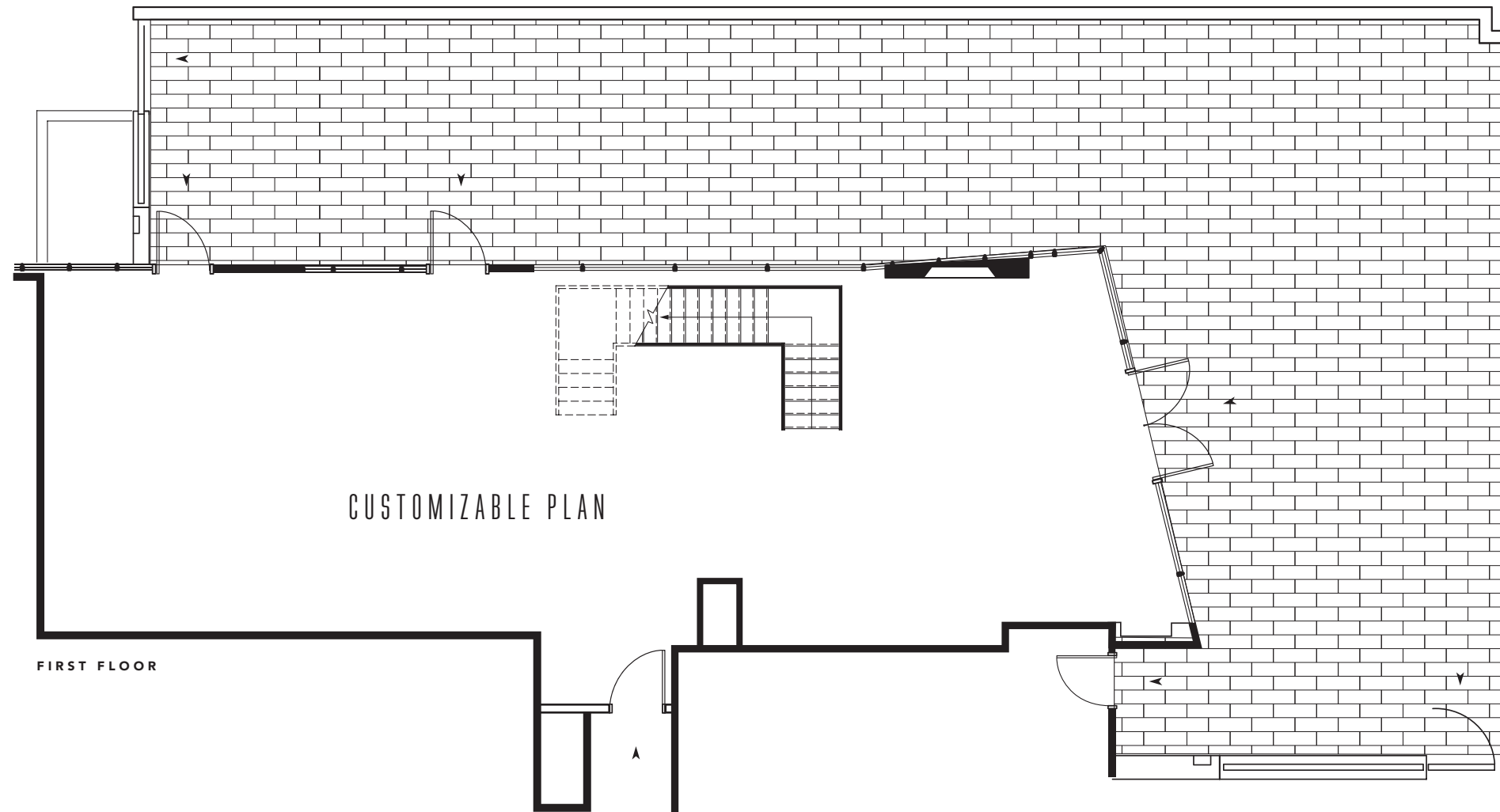
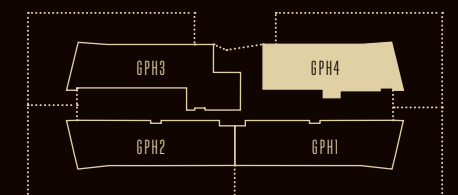
GPH4

GRAND PENTHOUSE

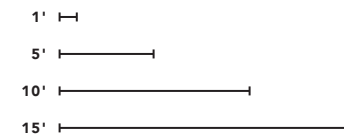
LIVING / 3,128
APPROXIMATE SQUARE FOOTAGE

TERRACE / 1,871
APPROXIMATE SQUARE FOOTAGE

UP TO 3 BED / 3.5 BATH



Plan not to scale. Trumark Urban and The Pacific reserve the right to make modifications in plans, exterior designs, prices, materials, specifications, finishes and standard features at any time without notice. Photographs, renderings and landscaping are illustrative and conceptual. All artist's renderings are for representational purposes only and subject to variances. Windows and floor plans vary per residence, elevation and type. Square footage is approximate and should not be relied upon as a representation, express or implied. Penthouses shown will be delivered pre-build and plumbing-ready to allow for custom configuration. The above floor plan is for illustrative purposes only. Please inquire for details. All rights reserved. Real estate consulting, sales and marketing by Polaris Pacific. A licensed California, Arizona, Colorado, Oregon and Washington broker—CA BRE #01499250. ©2016 The Pacific. Brokers must accompany their client(s) and register them on their first appointment in order to be eligible for a broker commission.



NORTH-EAST VIEWS

2121 WEBSTER STREET
 SAN FRANCISCO, CALIFORNIA 94115

THEPACIFICHEIGHTS.COM
 415 928 2121